



Runway 17R-35L Rehabilitation

CAPA 2021 'Best in Colorado'

RS&H


COLORADO SPRINGS
AIRPORT

Project Overview

- » 5-inch mill/overlay asphalt pavement of 150' x 11,022' Runway 17R-35L and Connector Taxiways
- » Sealcoat/Crack Seal Runway and Taxiway Shoulders and Blast pads
- » 25' wide full depth shoulder extensions
- » Replacement of Airfield Electrical infrastructure
- » New Generator and Airport Rotating Beacon
- » New pavement marking



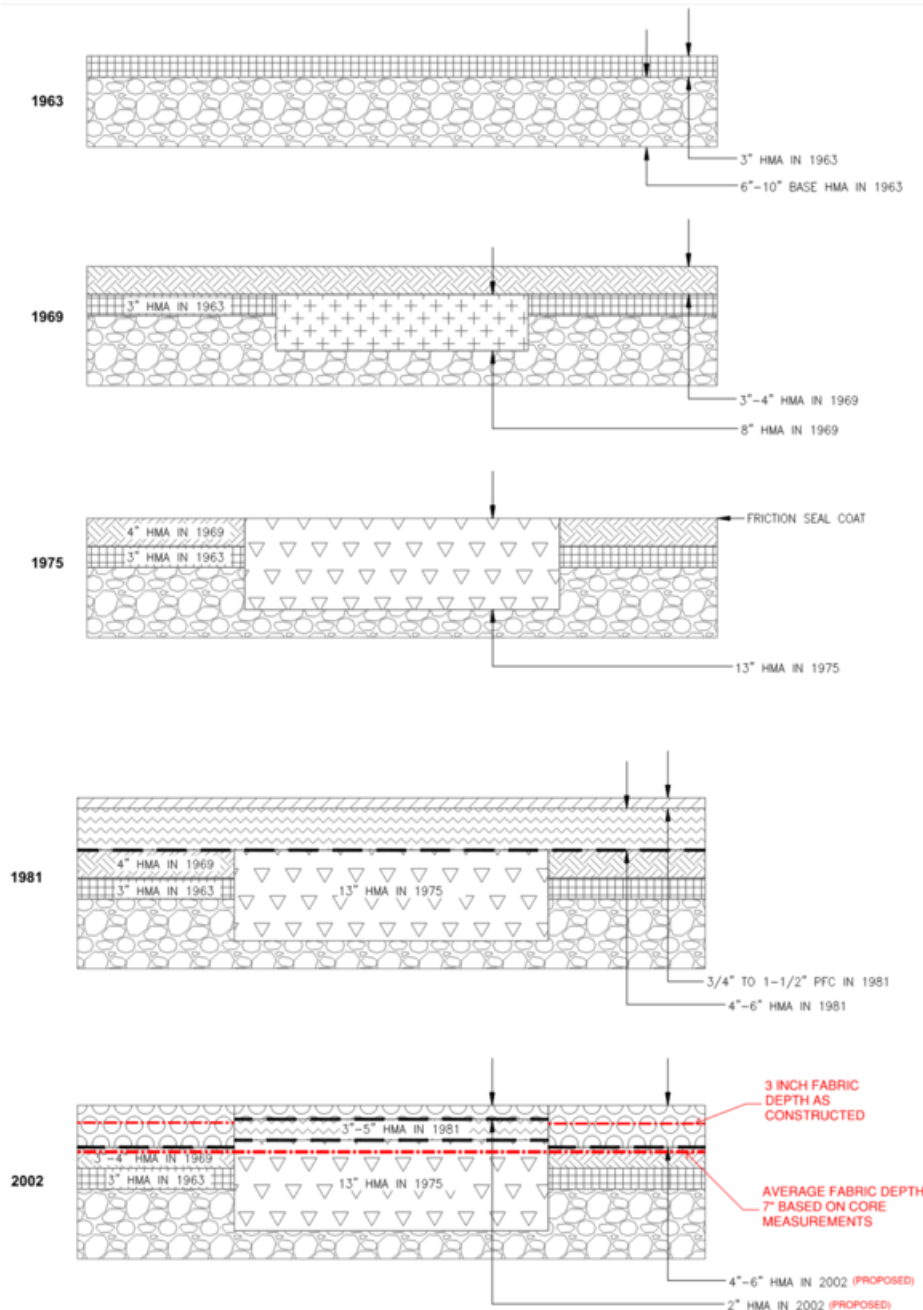
Design Key Participants

- » RS&H Team
- » Colorado Springs Airport
- » Predesign Team
- » West side tenants
- » Federal Aviation Administration



Design Development/Considerations

- » Originally Constructed in 1963
- » History of Multiple Rehabilitation Projects
- » Previous Engineer's Reports
- » Current Pavement Condition Index and Distresses
- » Geotechnical Investigation/FWD Testing
- » Depth of Stress Absorbing Fabric
- » Design Aircraft / Fleet Mix

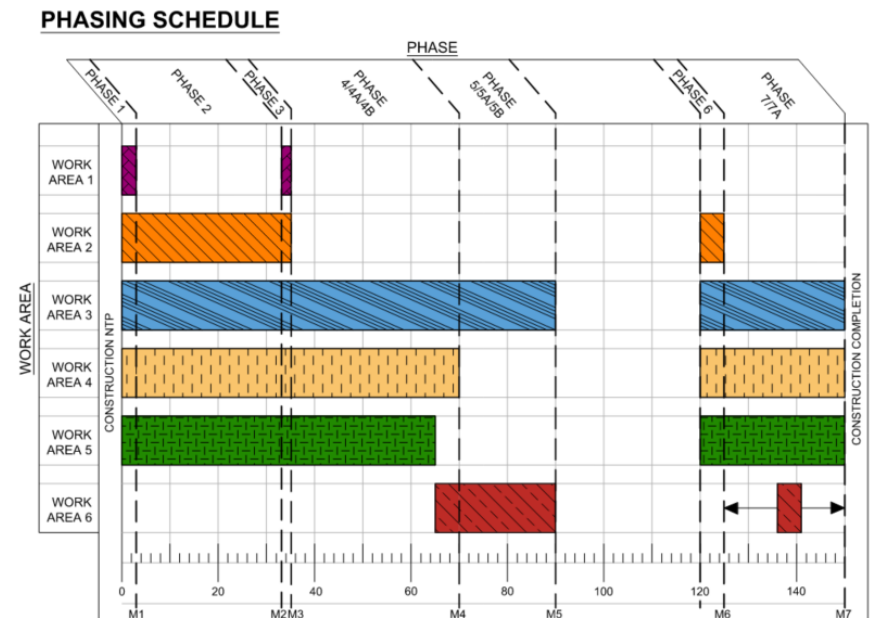
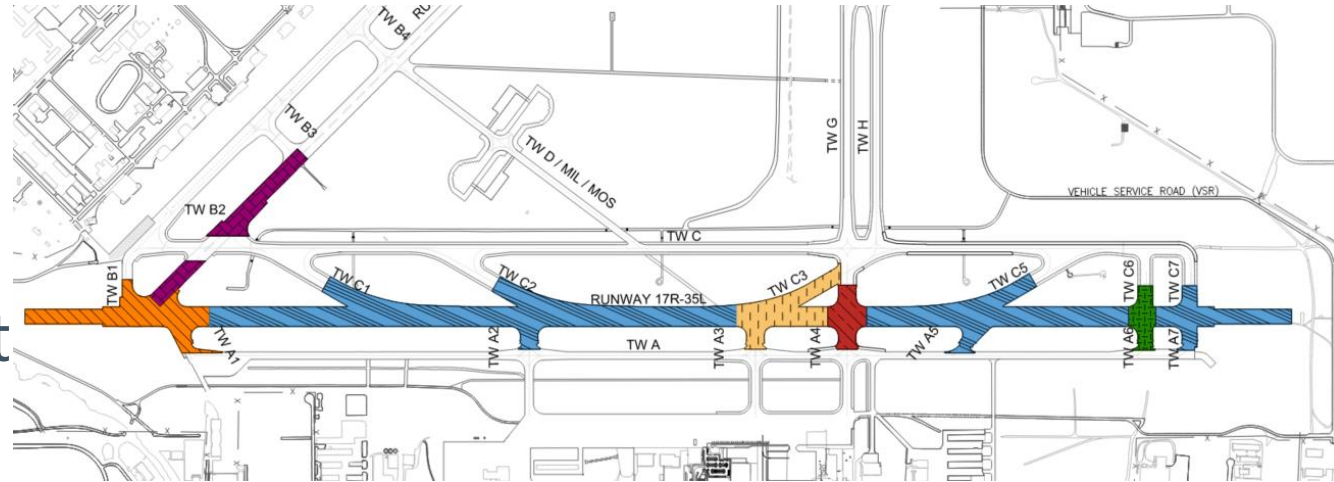


Geotechnical Investigation



Construction Phasing and Schedule

- » 7 phases with 6 subphases
- » 6 work areas
- » Maintain 2 crossings throughout construction
- » West side tenant impacts and outreach
- » Minimize overall Runway and Taxiway closure duration
- » Safety Risk Management Panel



Construction Key Participants

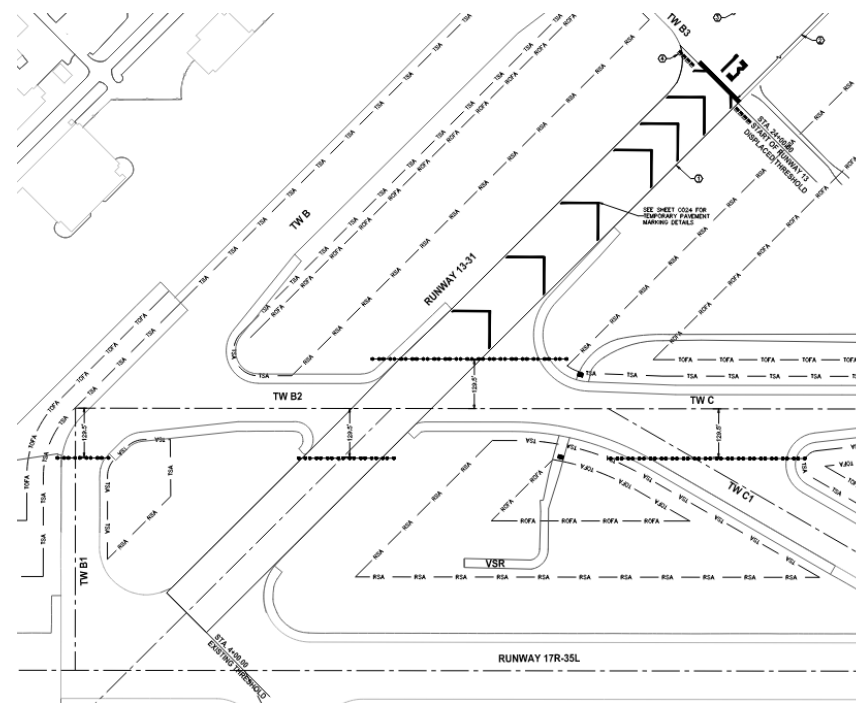
- » Colorado Spring Operations
- » RS&H on-site RPR's
- » Kiewit
- » QC Testing Team (Kiewit/Vivid)
- » QA Testing Team (Geocal)





Schedule Highlights

Major Milestone	Plan Date	Achieved Date
Re-Open RW 13-31	June 14 th	June 4 th
Complete Phase 4	July 24 th	June 28 th
Paving Complete		July 10 th
Complete RW Grooving		August 10 th
Re-Open RW 17R-35L	August 10 th	August 10 th



Paving Facts

- » 84,000 Tons Asphalt
- » 38 Total Paving Days
 - 2,210 Tons/Day Average
- » Largest Single Day Placement = 4,436 Tons
 - Placed approx. 1,600' of Runway Base Course (3-inches)
- » All asphalt placed received 100% payment for adherence to specs



Thank You!

Question & Answer

RS&H

