



# IN FRONT OF THE PAVER

September 2022

Membership Newsletter

Volume 22

Issue Number 9

## In This Issue

- \* A Word from CAPA
- \* Paving Around the State
- \* What's Happening
- \* Association News
- \* Environmental Advocacy
- \* Industry Updates
- \* Industry Calendar
- \* Asphalt Man

## CONTACT US

PHONE : 303-741-6150

E-MAIL: [office@co-asphalt.com](mailto:office@co-asphalt.com)

WEBSITE: [co-asphalt.com](http://co-asphalt.com)

## GET SOCIAL



#COLORADOASPHALTPAVEMENTASSOCIATION



#COLORADOASPHALTPAVEMENTASSOCIATION



#COLORADO\_ASPHALT\_PAVEMENT\_ASSO

## A Word from the Director of Engineering



Do you have an exceptional asphalt pavement project that is being constructed in 2022? If so, submit it for consideration in CAPA's 29th Annual "Best in Colorado" Asphalt Pavement Awards Program. Award categories include:

City Street	Project Innovation
Surface Treatment	Residential Subdivision
Project Delivery	In-Place Recycling Treatments
Urban Highway	Rural Highway Commercial Parking
Let Small Contractor	
Paving Airport	
Golden Circle	Special Use Pavement

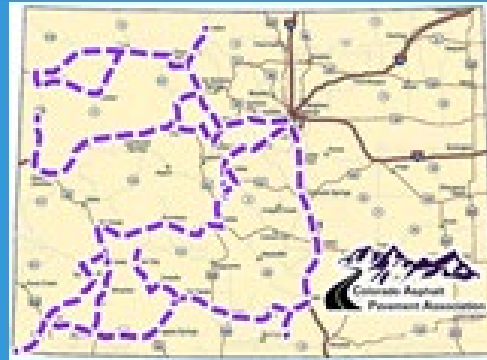
The "Best in Colorado" asphalt pavement awards program is open to all asphalt users, producers, and contractors. Projects nominated for awards can be submitted by the owner/agency and/or the contractor. Nomination forms are available for download on the CAPA website and must be submitted by October 28, 2022. The nomination forms and criteria may be found on the [CAPA Website: Best in Colorado! .com](http://CAPA Website: Best in Colorado! .com)

A panel of judges from Local Agencies and organizations such as APWA, CARSE, ACEC, CDOT, FHWA, will review and rate all nominated projects. If you have questions, please contact Mike Skinner at: [mikeskinner@co-asphalt.com](mailto:mikeskinner@co-asphalt.com)

Mike Skinner, P.E.  
Director of Engineering  
Colorado Asphalt Pavement Association  
[mikeskinner@co-asphalt.com](mailto:mikeskinner@co-asphalt.com)  
(720) 588-7361



# PAVING AROUND THE STATE

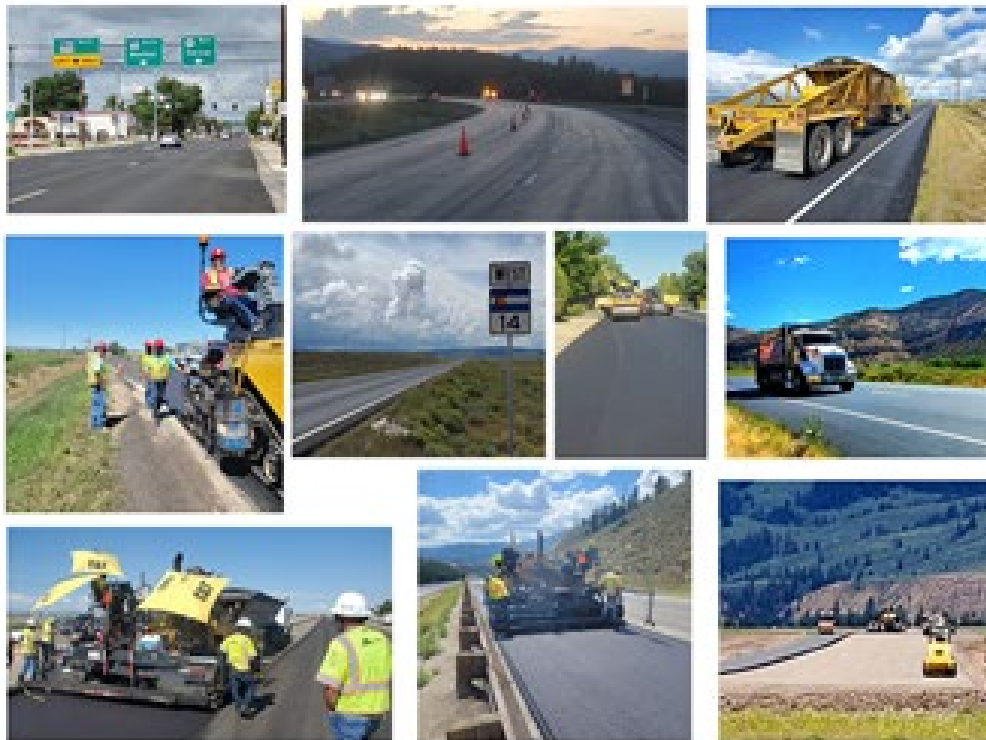


## Quality in Asphalt Construction - Statewide Observations

In late August, Mike Skinner, CAPAA's Director of Engineering, spent two weeks driving almost 3,000 miles around the western half of Colorado, from Weldon to Cortez and Rangely to Alamosa (and almost everywhere in between) visiting western slope CDOT paving projects. My first observation from my travels... we are all lucky to live in such a beautiful state. Colorado is truly impressive with our high deserts, rolling grasslands, red rock canyons and Rocky Mountains. Out of state tourists spend thousands of dollars to vacation here to experience what we have right in our own backyard, so take advantage of what we have. My second observation... Colorado's asphalt paving industry's commitment and dedication to quality construction is impressive. I visited projects at airports and State Highways, back country county roads for surface mining and Colorado Scenic Byways and they all had a common theme...commitment to quality. Driving the state highways across CDOT Region 5 (Southwest Colorado) you're reminded how smooth and quiet the roads are, that's no coincidence. Region 5 is a perennial winner for CDOT's smoothness award and our industry contractors that pave in Region 5 are proud of that.

Successful paving doesn't happen by accident, proper planning and efficient execution are key to long-lasting roadways. Most people who work on a road crew know that there's a lot more to building a long-lasting, quality roadway than just putting some hot rocks on the ground and compacting them. Time and energy in project planning, mix design and machine maintenance are all spent in order to achieve the desirable end result: a smooth pavement that will stand up to the test of time and the view of the traveling public.

For more information, contact [Mike Skinner](#).



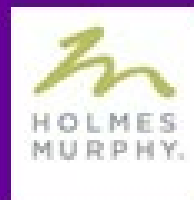
Top Left - US 40 Craig, Top Center - I-70 near Chief Hovea, Top Right - US 160 Monte Vista

Middle Left - SH 1, north of Ft. Collins, Middle Left SH - 14, Middle Right - City of Greeley Overlay, Middle Right - SH 133

Douglas Park

Bottom Left - U.S. Purcell Ave, Bottom Center - I-70 Near Silverthorne, Bottom Right - Creed Airport

## WHATS HAPPENING



**CAPA GOLF EVENT HAS SOLD OUT!**

**SPONSORSHIPS ARE STILL AVAILABLE!**

Thank you to all who have registered to support our annual event. The Annual CAPA golf outing will be held on Friday September 16, 2022 at Fox Hollow Golf Course in Lakewood. Sponsorships are available at all levels. **SPUNKYUM TODAY, YOU DON'T WANT TO BE LEFT OUT!** [More information from Tom Gilman](#) or 303-602-2439

## ASSOCIATION NEWS

### **CAPA Welcomes TWO New Affiliate Member**



**Roadway Asset Services:** Founded in Austin, Texas, Roadway Asset Services (RAS) is an **infrastructure asset and pavement management company** providing automated data collection, analysis, and consulting services to transportation agencies and companies to help reduce their workload and provide efficiencies in managing their asset inventories and determining best maintenance strategies. [The RAS team](#) consists of senior management, with 100 years of combined experience with pavement management and geotechnical studies. Our experienced staff in combination with the implementation of leading-edge technology, and the ability to deliver projects on time and within budget is the pillar of the RAS execution. A key component to the consistent success of our pavement and asset management projects, as well as our automated data collection projects, is the continuity of our staff. Our diverse experience working with established pavement and asset management systems helps us provide an unmatched level of efficiency across a full gamut of complementary services. Contact [Scott Gordon](#) or call 214-789-0041



**Steffes Group, Inc.** is a nationally recognized leader in the **auction industry**, engaged in the business of marketing farm, construction, transportation equipment, and real estate at public auction for over 60 years. The company was founded in 1950 by Robert Steffes who primarily sold farm equipment and livestock. In 1984, the business incorporated and moved all business operations to Fargo, North Dakota. From that time forward, the company has experienced significant growth and an expansion of its service offerings. We now have locations in North Dakota, South Dakota, Minnesota, and Iowa, and have representatives serving all of the Midwest. We have had the opportunity to not only expand our geographic footprint but also our list of service offerings that are aimed to be complementary to one another. We, through our contributing divisions and team members, offer a variety of services to our clients. Contact [Teresa McNamee](#) or call 720-702-2365

## Associate & Affiliate Members in the News

The [Summer Issue of the Colorado Public Works Journal](#) is available. Industry items in this issue include:

- [Wirtgen F-Series Compact Milling Machines for Cost Efficient and Sustainable Cold Milling](#)
- [John Deere Announces New Global Agreement with Wecker Hession on 0-9-Metric-Ton Excavators](#)



CAPA's Local Agency Streets Forum is an opportunity for City and County Public Works staff to network and share Best Practices with their peers. The Forum is hosted twice a year.

**January:** Industry Trends & Outlook, Funding, Procurement  
**October:** Technical, Specifications, Materials, Asset Management

**October 12, 2022**



City of Westminster  
Municipal Service Center  
6575 W 88<sup>th</sup> Ave. (10:00 – 12:00)  
Free Registration: [co-asphalt.com](http://co-asphalt.com)

For additional information:  
Mike Skinner, Director of Engineering  
303.741.8150 ext. 155  
[mikeskinner@co-asphalt.com](mailto:mikeskinner@co-asphalt.com)



Lunch will be provided. [Register Here](#) for the 2022 Local Agency Forum.

## ENVIRONMENTAL ADVOCACY

CAPA participated in a day long [Environmental Product Declaration \(EPD\) Workshop](#) on August 18. The event was sponsored by CDOT and hosted by CU Boulder. Tom Peterson attended representing CAPA and made a presentation at the event. EPDs are now required for CDOT projects greater than \$3 M and with 500 tons or more of HMA. For more information, contact [Mike Skinner](#).



Check out the updated website [Safe Asphalt for Everyone](#) that provides information to address questions on environmental issues and asphalt materials production. Recently added is the study titled, [Roadways Live with the Asphalt Production Industry](#).

### Defining the Road Forward: Scope Emissions

NAPA aims to educate members about sustainability terminology they are likely to encounter in climate discussions:

**Scope One Emissions** – Emissions from company-owned and controlled resources.

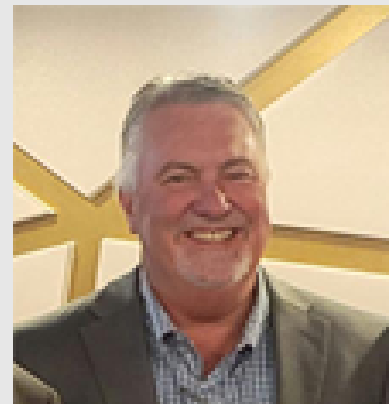
**Scope Two Emissions** – Emissions (indirect) from a company's purchase of generated power.

For more information, visit [www.scopeassessment.org/climate](http://www.scopeassessment.org/climate)



### Yard Signs Available

The CAPA Board of Directors have endorsed Joe O'Dea for US Senate. Yard signs are available at the CAPA Office. For more information, contact [info@capa-napa.com](mailto:info@capa-napa.com). For more information on the Joe O'Dea for US Senate campaign or to contribute, visit [www.uscolorado.com](http://www.uscolorado.com)



[APC Construction, a CRH Company](#), held a campaign event at their Ralston Quarry on August 15 in support of [Joe O'Dea](#) for US Senate and [Erik Aedland](#) for Congressional District 7. (Photo: (left to right), Erik Aedland, Jeff Keller, Tom Peterson, and Joe O'Dea.



# NCAT ASPHALT TECHNOLOGY COURSE RETURNS TO COLORADO November 7-10, 2022



This four day training focused on asphalt materials and construction, is being held November 7 to 10, 2022, and taught by NCAT instructors. The training is intended for engineers, inspectors, testing technicians, contractors, project managers, estimators, superintendents, and all who have the need to become more knowledgeable of asphalt materials and construction practices in order to build, preserve, and maintain a sustainable highway system. [Click here to view the program content.](#)

It will be held at Baldoria on the Water, 148 Van Gordon Lakewood, CO



[Link to Register, don't miss out! Space is limited. Register before September 18 and receive an early registration discount.](#)

When this training was held in the fall of 2019, we sold out with approximately 100 attendees from local agencies, CDOT, consultants and contractor's personnel in attendance. Need more information? [Contact Tom Clayton](#)



## SAPA Annual Meeting 2022

Tom Peterson attended the [State Asphalt Pavement Associations](#) Annual Meeting in New York on July 31 – August 2. The event was hosted jointly by the [New Jersey Asphalt Pavement Association](#) and the [New York Construction Materials Association](#) and attended by representatives from 32 associations and leadership from the National Asphalt Pavement Association. Photo: (left to right) Kevin Monaco – New Jersey, Tom Peterson – Colorado, Brian Wood – Kentucky, Bruce Berkovich – New York.

## The 50th Annual Rocky Mountain Asphalt Conference and Equipment Show

[Exhibitor and Sponsor information is here](#) and available from the conference website. The Exhibitor and Sponsor prospectus is viewable, [here](#).

Planning is well under way for the [50th Annual RMACES](#) to be held on Tuesday and Wednesday February 7 and 8, 2023, at the National Western Complex. The trade show will be bigger and better as we transition to next year.

Would you like to be an exhibitor? [Contact Tom Clayton](#) for the details on how you can be a part of the Golden Anniversary of this great show. In 2023 the RMACES is set to be the largest Asphalt only show in the country. Watch this news letter in the upcoming months to see the line up of great speakers for the conference!

Attendee registration will open in the fall.



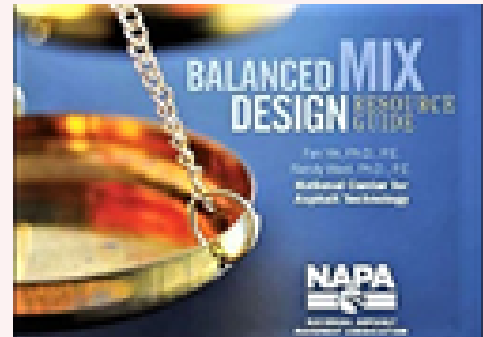
# INDUSTRY UPDATES

The Department of Construction Management Fall 2022 CM Career Fair planned for September 27th is SOLD OUT. [Link here for more information on Careers, Internships and Recruiting at CS, CM](#), or contact [Anna Fontana](#).



## NEW Tools on the Balanced Mix Design Resource Guide

As part of the NAPA project to enhance and maintain the [Balanced Mix Design Resource Guide](#), the National Center for Asphalt Technology (NCAT) has developed a new calculator that helps mix designers determine specimen weights to achieve target densities on specified height samples, which are utilized for laboratory performance testing. Visit the new [tools page](#) on the BMD site to download a free copy of the calculator and watch the video tutorial on how to use the spreadsheet. CAPA held a successful BMD webinar on July 28, link here for [CAPA Asphalt Webinar](#).



## Listen to the Latest Pave It Black Podcast: Construction Sector Sustainability

In the latest episode of [Pave It Black](#), Richard and Ben talk with Kelly Roberts with Walter P. Moore about the industry's and the company's focus on sustainability and how great strides have been made in this area over the last decade.



## CAPA/INDUSTRY CALENDAR

### Task Force/Committee Meetings & Events

28th Annual CAPA Golf Tournament, September 16, 2022, Fox Hollow Golf Club, Lakewood. **SOLD OUT!**

Annual Conference Planning Committee, September 19, 2022 in the RMAEC Training Room 12:00pm

Board of Directors Fall Meeting, September 28-29, Beaver Creek

Marketing Committee Meeting, October 3, 2022 in the RMAEC Training Room 11:30am to 1:00pm

Local Agency Streets Forum, October 12, 2022 at Westminster Municipal Center 10am to Noon

Asphalt Industry Forum Kick Off Meeting, October 26, 2022 Location & Agenda TBD

CAPA Safety Council Meeting, November 16, 2022 in the RMAEC Training Room

CAPA New Member Luncheon and Christmas Reception, December 9, 2022, Balders on the Water, Lakewood.

The CDOT/CCA Specification committee is in need of another representative from the Asphalt Industry. If you might be interested in this committee or want additional information contact [Tom Clayton](#)

Contact [Tom Clayton](#) with questions for need for additional information for any of these events or meetings.



**2022 LabCAT PROGRAM CERTIFICATION SCHEDULE**

**Asphalt Technician Certification**

**Standard Session - Levels A, B, C**

January 18 - 20	May 9 - 11
February 1 - 3	June 7 - 9
February 10 - 12	July 12 - 14
March 7 - 9	August 9 - 11
March 28 - 31	September 20 - 23
April 18 - 21 Gr. Junct.	October 11 - 13
	November 8 - 10

**Streamline Session Recertification - Levels A, B, C, E**

January 26	April 18-Grand Junct.
February 22	May 16
March 8	June 14
April 5	September 27

**Standard Session - Level A Only**

February 24	May 10
March 8	June 15
April 5	

**Certification Fees Standard & Streamline**

Levels	CAPA Member or CDOT	Non Member
Level ABC	\$725	\$1275
Level AB	\$550	\$900
Level A	\$375	\$445
Level B	\$525	\$925
Level C	\$375	\$915

**Registration**  
*Submit your registration request by email or FAX to the RMAEC*  
 • email: [emas@ro-asphalt.com](mailto:emas@ro-asphalt.com)  
 • fax: 303-741-8148 or 303-741-8148  
 • mail: RMAEC, 17500 E. Hampden Ave., Denver, CO 80232

Forms are located on the CAPA website. See LabCAT Technician or APM Inspector Registration. You may also contact the RMAEC for forms.

RMAEC phone: (303) 741-8148 ext 154  
 CAPA website: [www.ro-asphalt.com](http://www.ro-asphalt.com)

**Aggregate Technician Certification**

**Standard Session - Level E**

January 26	June 16
February 22	September 28
April 21 Grand Junct.	

**Certification Fees**  
 CAPA Member \$325 Non Member \$500



**Asphalt Paving Materials Inspector Certification**

**Standard & Streamline Sessions**

January 5
January 27
March 15
March 16 Streamline Recertification
April 19 Grand Junct.
April 26
May 17
July 26
July 27 Streamline Recertification
October 18
October 19 Streamline Recertification

**Certification Fees Standard & Streamline**  
 CAPA Member \$275 Non Member \$425

**Registration Prerequisites**  
 Asphalt Technicians and APM Inspectors are required to satisfy all qualifying prerequisites for their initial certification. Please reference the RMAEC Policy & Procedure Manual or the registration prerequisite form for details.

**LabCAT Schedule for 2022**

The 2022 schedule of LabCAT certification sessions is available. There are three remaining Standard (Levels A, B and C) Sessions, one Streamline Re-Certification Sessions, one Aggregate Technician Certification Sessions (Level E), and one Level A only sessions remaining on the schedule. In addition there is one remaining Asphalt Paving Materials Inspector Sessions which included one streamline Re-Certification dates. To see the full schedule, [see this link](#). All of the sessions are filling fast, don't be left out if you need to be certified or re-certified.

To register for any of the upcoming Certification or Re-certification Session [see this link](#) to find the appropriate registration forms.

If you have questions about any of the sessions or dates, contact [Doree Hammond](#) or Call 303-741-8148 Extension 154

**FINAL PC/OA TESTING SESSION FOR 2022**

The final Introduction to PC/OA testing session will be held October 4 to7. This training is useful for both entry level technicians who are preparing for asphalt technician certification, as well as for more seasoned technicians who may be re-entering the testing arena.

If you have questions about any of the sessions or dates, contact [Doree Hammond](#) or Call 303-741-8148 Extension 154

**UPCOMING RMAEC WEBINARS for September and October**

UP NEXT: Thursday, September 22, 2022 @ 11:30am [Asphalt Overlay Best Practices](#)  
 This webinar is presented to explore the "Best Practices" for Asphalt Laydown and Compaction. This will be led by Tom Clayton, Director of Training CAPA/RMAEC

**WEBINARS ON DECK!**

Thursday, October 13, 2022 @ 11:30am to 1:00pm - [Creating an Infrastructure Program Maintenance Plan for Roadways & Parking Lots](#)  
[Register here](#)

Thursday, October 27th, 2022 @ 11:30am to 1:00pm - [Cold Weather Paving](#). This will discuss the Best Practices for placement of Asphalt in Cold weather conditions.  
[Register here](#)

The 2023 Schedule of Webinars will be published in December of 2022!  
 For more information about any of the webinars contact Tom Clayton.







# FARIS MACHINERY

## Upcoming events for the Colorado Branch:

September 15, 2022, Mixer - Equipment operations hosted by Farris Equipment.

Come spend the evening with the Women of Asphalt Colorado and learn about the best paving practices including demonstrations on the equipment. The evening is sponsored by Farris Machinery.

Dress: No open toe shoes or tank tops. 15% will be provided.

Agenda:

5:30pm arrival and introductions

6:00pm presentation and demonstrations in yard.

6:45pm wine and appetizers/networking

7:30pm Depart

Hosts: Bill Smith - Sales Manager, Dave Barthel - Key Account Manager, Gilea Postolon - President

[REGISTER FOR THE EVENING AT FARIS MACHINERY HERE!](#)

September 29, 2022, Exhibit at Transportation and Construction Girl, Jefferson County Fairgrounds

October 20, 2022, Mixer - Body Language by Kathleen Hutman, hosted by Farris and Sons, Location to be determined

November 17, 2022 - Virtual, Topic to be determined

December 15, 2022 - Christmas Party hosted at the Rocky Mountain Asphalt Education Center 6:00pm

October 2022 - 8am to 1pm - Planning - Finance & Design - Phasing - Project Delivery Method - Environmental/SWMP

May 12, 2023 - Women of Asphalt Golf Tournament, Next Year is already in the planning for Friday May 12, 2023.

## Do you have a question for ASPHALT MAN?



**QUESTION:** My street was chip sealed earlier this week, how long does it take for the chip seal to cure?

**ANSWER:** Typically, traffic is allowed onto a chip seal within hours, however there are many things which need to be considered when allowing traffic back on the roadway. It is important to understand the process of placing a chip seal.

### The chip seal process

1. Asphalt is mixed with about 30% water. This emulsified mixture is then applied to the road using a special spray truck. As soon as the liquid asphalt meets the road surface, the water starts to evaporate.
2. Immediately after spraying this asphalt, a layer of crushed gravel is applied by a spreader. The gravel (or chips) has a maximum size of 3/8 inch.
3. Next, the gravel is compacted and embedded into the asphalt by rubber-tired rollers. However, even with the high-pressure rolling, some gravel will not become embedded in the asphalt.
4. The new chip-seal surface can require up to two days to cure properly. Hot, dry weather helps speed up this process in which all of the remaining water in the emulsion evaporates and the asphalt hardens. Traffic can pass over this surface at reduced speeds during the curing process.
5. After curing, the loose gravel is swept off the surface. This may take several sweepings.

### Reduced speeds

As with any highway construction project, motorists must exercise caution. Reduced speeds ensure your safety and minimize the chance of damaging your vehicle.

During the chip seal process, from the time the gravel is placed on the road to when the excess is swept away, the speed limit is 35 mph. At that speed, vehicles should not be damaged by flying rocks.

## Follow our social pages for more information:



***@COLOASPHALTPAVEMENT ASSOCIATION***



***@COLORADOASPHALTPAVEMENT ASSOCIATION***



***@COLORADO\_ASPHALT\_PAVEMENT\_ASSO***



[Tom Peterson](#)  
Executive Director



[Tom Clayton](#)  
Director of Training &  
Member Services



[Mike Skinner](#)  
Director of Engineering

This email was sent to [tomclayton@co-asphalt.com](mailto:tomclayton@co-asphalt.com) by [info@co-asphalt.com](mailto:info@co-asphalt.com)

Colorado Asphalt Pavement Association

[Remove My Email or Manage Preferences](#) - [Privacy Policy](#)

powered by  MemberMail